

(4) Personal protective equipment

- Goggles must be worn when performing grinding work and drilling work and using cartridge-operated fixing tools.



(5) Handling of materials

- Consider your capability when handling materials. Large and bulky materials should be handled by team lifting or mechanical aids. Never lift heavy loads with your back bent.



(6) Storage of materials

- Keep the workplace clean and tidy so that you can work effectively and happily.



In addition, according to Section 6B of the Factories and Industrial Undertakings Ordinance, an employee should co-operate with his employer and other persons in complying with the safety legislation and codes of practice, and should not do anything to endanger himself or other persons.

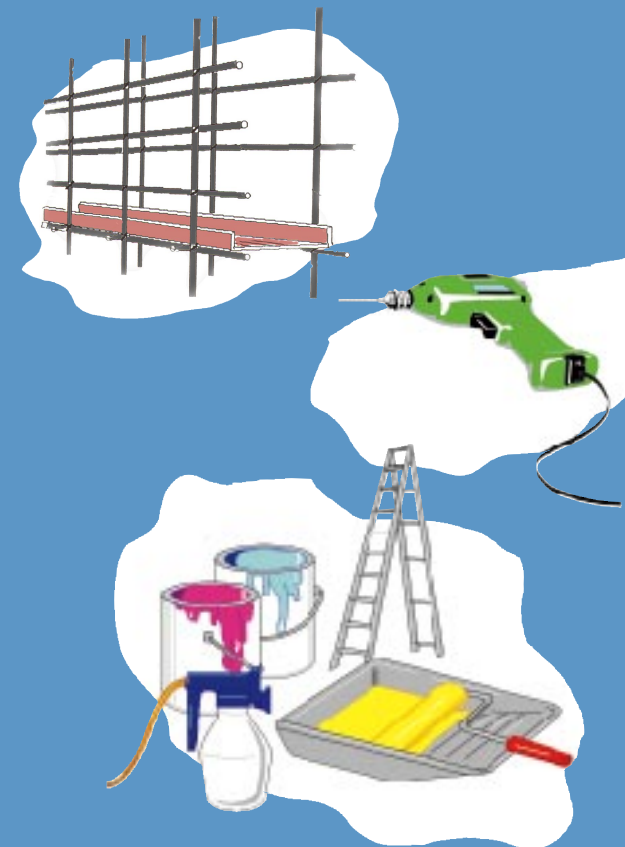


Enquiries

- ☎ Telephone : 2559 2297
- ☎ Fax : 2915 1410
- ✉ E-mail : enquiry@labour.gov.hk

Information on the services offered by the Occupational Safety and Health Council can be obtained through hotline 2739 9000.

Safety Hints on Renovation Work



In major construction projects, contractors usually adopt more comprehensive safety management systems to deal with the safety issues.

As for those small scale renovation work, the responsible persons have to take action to ensure the safety and health of their employees. They may utilize the services of the Labour Department or the Occupational Safety and Health Council.

Irrespective of the scale of work, it shall be the duty of proprietors/employers to ensure, so far as is reasonably practicable, the safety and health at work of persons employed by them.

Pursuant to Section 6A of the Factories and Industrial Undertakings Ordinance, a responsible person of renovation work:-

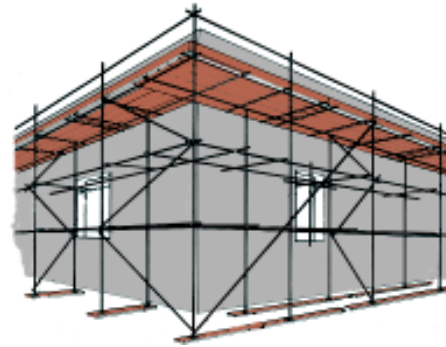
- (A) commits an offence and is liable to a fine of \$500,000 if he contravenes the provisions of the General Duties.
- (B) commits an offence and is liable to a fine of \$500,000 and to imprisonment for six months if he contravenes the provisions of the General Duties wilfully and without reasonable excuse.

1

Please pay special attention to the following safety issues relating to general renovation work:-

(1) Work at height

- Double row scaffoldings and working platforms must be erected if work at the external walls of buildings is involved



- Safety harness must be used and attached to secure anchorage points when working at height.



2

(2) Prevention of fire

- When using paint, adhesives, thinner, waterproof or leakproof materials, ensure that the workplace is well ventilated and keep these materials away from source of ignition.

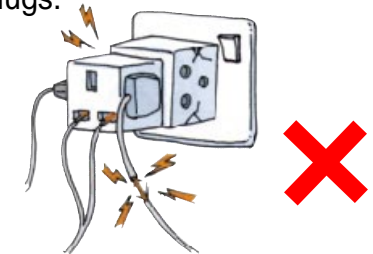


- Never smoke in the workplace to avoid leaving any source of ignition.



(3) Electric tools

- Electric hand tools and welding machines must meet specifications and be connected to power supply by use of proper plugs.



3