



On-the-spot Interview
Win-win for job seekers and employers



For Reference Only

Opening Hours

Monday to Friday 9am to 5:30pm
Saturday 9am to 12pm

Address

G/F, Revenue Tower, 5 Gloucester Road, Wan Chai, Hong Kong
(Exit A5, Wan Chai MTR Station)



**Looking for
Jobs?**



**Recruiting
Staff?**

**Recruitment Centre for the
Retail Industry**
is your choice



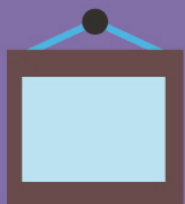
On-the-spot job interviews

save job seekers' time in finding jobs

Recruitment activities are staged by retail employers at the centre and job seekers can apply for jobs on offer and attend selection interviews on the spot, which saves job seekers' time in job search.



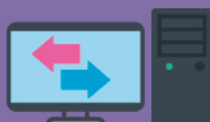
User-friendly facilities



A large number of vacancies from the retail industry are posted in the Recruitment Centre. Job seekers can make use of the "Job Explorer" Vacancy Search Terminals, job card display panels, or browse through the "Interactive Employment Service" website for the latest vacancy information.

Job seekers can prepare and send resumes and application letters to employers by using the computers with internet connection in the Centre.

Telephone and fax machine are available in the Centre for facilitating job application.



One-stop recruitment service

helps employers speed up the recruitment process

Dedicated for staging recruitment activities for retail employers and providing venue for them to conduct on-the-spot job interviews with job seekers.

Administrative support will be offered to employers in the recruitment process, including publicising of vacancies, collecting application forms and arranging job seekers to attend selection interviews on the spot.



Free and one-stop recruitment service helps employers simplify and speed up the recruitment process.

Job Seeker Hotline

2594 7833

Employer Hotline

2594 7838

**For details of our
recruitment activities**

Please visit
www.jobs.gov.hk

