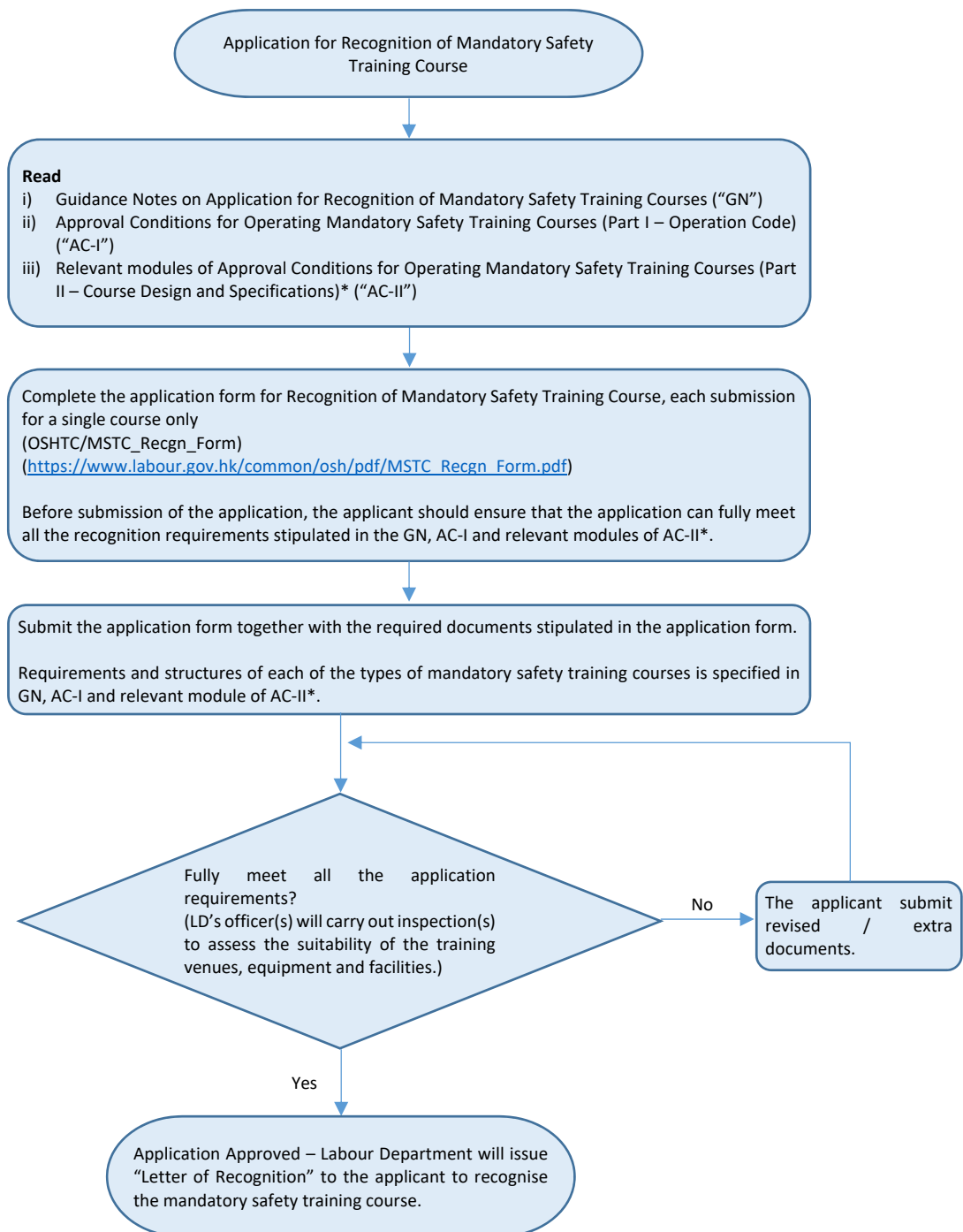


## Flowchart of Application for Recognition of Mandatory Safety Training Course



### \*Relevant modules of AC-II

- (a) Approval Conditions - For Mandatory Basic Safety Training Courses (Construction Work)
- (b) Approval Conditions - For Mandatory Basic Safety Training Courses (Container Handling)
- (c) Approval Conditions - For Safety Training Courses for Certified Workers of Confined Spaces Operation
- (d) Approval Conditions - For Safety Training Courses for Competent Persons of Confined Spaces Operation
- (e) Approval Conditions - For Training Courses for Operators of Crane
- (f) Approval Conditions - For Training Courses for Operators of Loadshifting Machine
- (g) Approval Conditions - For Training Courses for Persons Working on Suspended Working Platforms
- (h) Approval Conditions - For Gas Welding Safety Training Courses