

**Introduction**

The Transport Support Scheme was launched in June 2007 to provide time-limited transport allowances to encourage eligible job-seekers and low-income employees living in the four remote districts of **Yuen Long, Tuen Mun, North and Islands** to find jobs and stay in employment. To allow more people in the four remote districts to benefit from the Scheme, the Government has introduced a series of relaxation measures, including relaxing the eligibility criteria and extending the duration of subsidy.

With effect from 1 October 2011, the TSS will be replaced by a Work Incentive Transport Subsidy Scheme to help all eligible low-income employees on a household basis in Hong Kong meet part of their travelling expenses. On the same day, the TSS will stop receiving new applications.

**Date when applications can be made**

- From 2 July 2008 till 30 September 2011

**Eligibility criteria**

Applicants must meet the following criteria:

- be lawfully employable in Hong Kong;
- be currently residing<sup>1</sup> in Yuen Long, Tuen Mun, North and Islands;
- having a personal asset<sup>2</sup> value of no more than \$44,000;
- having a monthly income<sup>3</sup> of no more than \$6,500 (not applicable to the unemployed) ; and
- (i) as an employee who is working 72 hours or more a month **OR**  
(ii) as a job-seeker (an unemployed or an employee intending to change jobs) who intends to work for 72 hours or more a month

**Allowance payable**

- **On-the-job Transport Allowance:** \$600 per month, up to 12 months
- **Job Search Allowance:** up to \$600 (on a reimbursement basis)

**Period for claiming allowances**

Within 24 months from the approval date of application<sup>4</sup>

---

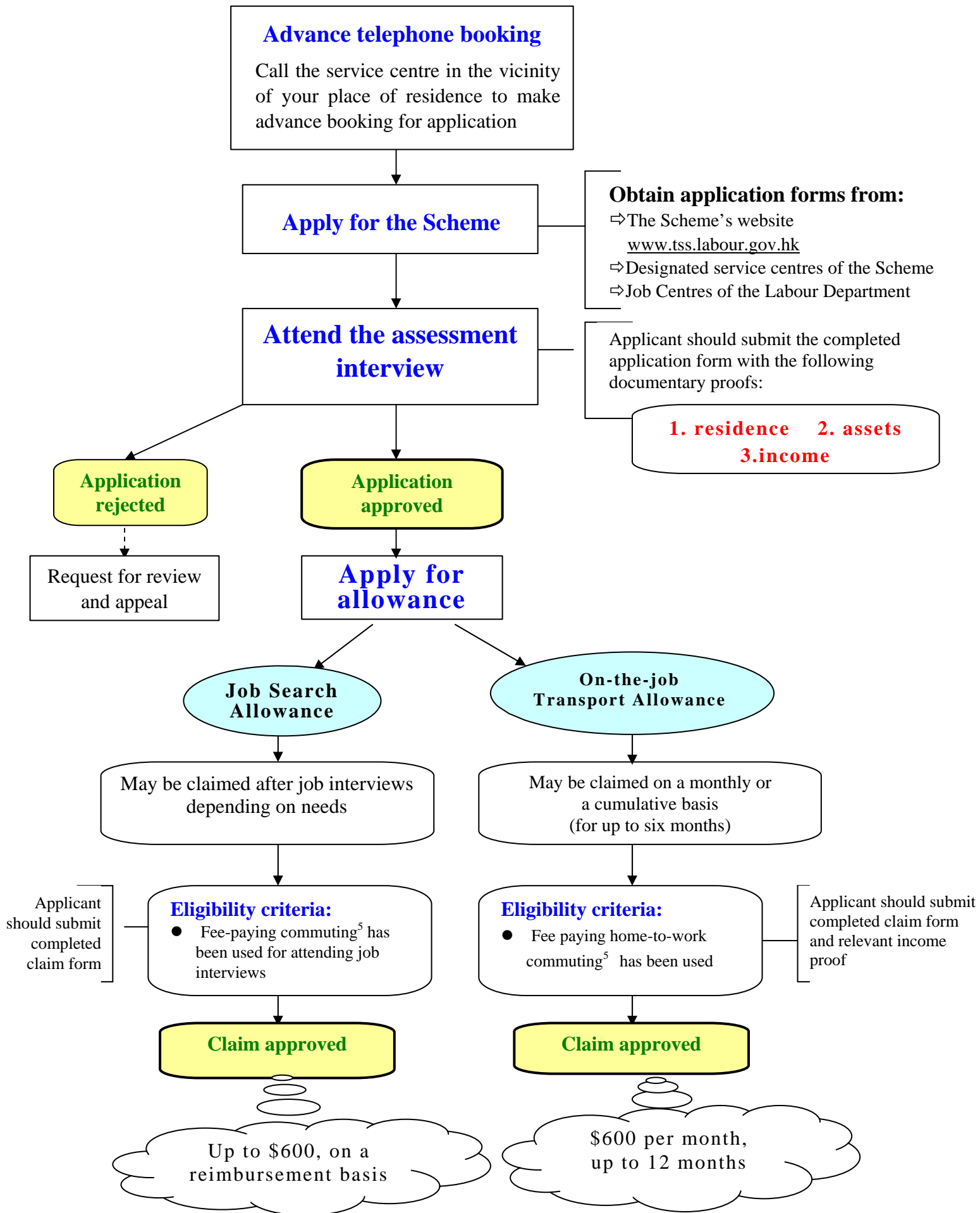
<sup>1</sup> An applicant's residential address refers to his/her only or principal residence in Hong Kong.

<sup>2</sup> Personal assets include land/properties, cash, bank deposits, cash value of insurance policy, investments in stocks and shares, and other readily realizable assets (including those in Hong Kong, Macau, the Mainland or overseas countries/territories). Self-occupied property is not included.

<sup>3</sup> Monthly income refers to total incomes from all jobs in a month. Employee's mandatory contribution to a Mandatory Provident Fund Scheme is not included.

<sup>4</sup> The qualifying period for applicants admitted prior to the relaxed Scheme is 24 months from the implementation date of relaxation, i.e. 2 July 2008.

# Application procedures

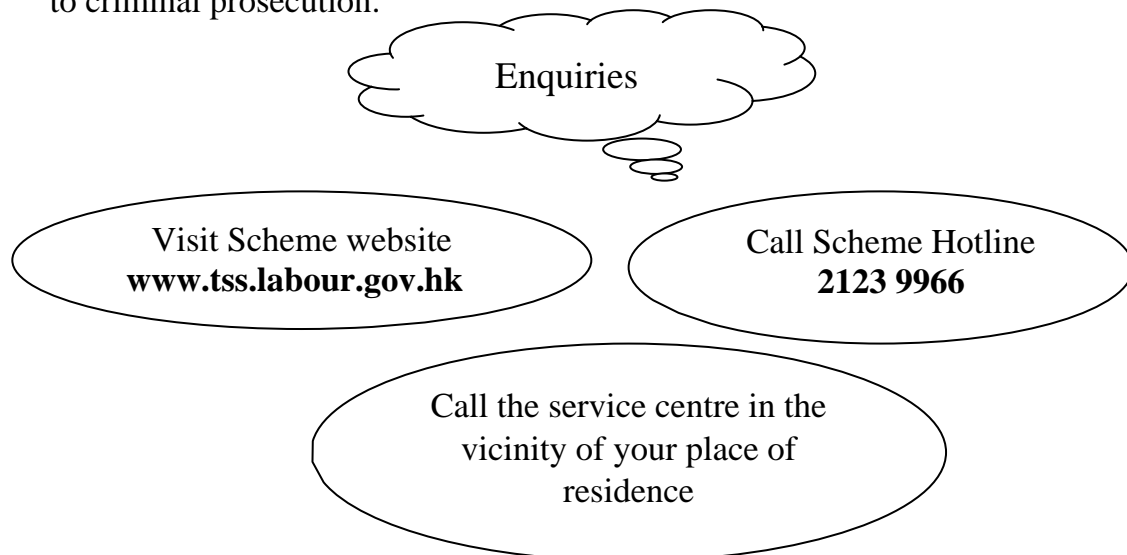


5 Transportation used by applicants refers to public transportation only (e.g. mass transit railways, bus, mini-bus, ferry, etc., excluding taxi).

1. Every applicant is allowed to participate in the Scheme **once**. Upon approval of application, an applicant can claim a maximum amount of HK\$7,200 and HK\$600 for On-the-job Transport Allowance and Job Search Allowance respectively. Any claim of allowance must be made within 24 months from the approval date of application.
2. Applicants are not allowed to submit multiple applications to different service centres.
3. Applicants should **not concurrently apply for or receive similar employment-related transport subsidies**, including:
  - Temporary Financial Aid (related to transport subsidy benefits) of the employment services provided under the Comprehensive Social Security Assistance (“CSSA”) Scheme of the Social Welfare Department (“SWD”); and
  - the grant to cover traveling expenses to and from work for the elderly, disabled and ill-health under the CSSA Scheme of the SWD.
4. Applicants are not receiving full-time education or training.

#### **Points-to-note**

Deliberate provision of false information or omission of information in order to obtain the allowances by deception is a criminal offence. In addition to being disqualified for the Scheme and the allowances, the applicants may be subject to criminal prosecution.



Transport Support Scheme  
List of Service Centres under the Implementing Agencies

List of Service Centres

*\* For application, please make telephone booking with the service centre in advance.\**

Implementing Agency	Address of Service Centre	Tel. No.
<b>Yuen Long</b>		
1. Hong Kong Employment Development Service Limited	203-206 Podium, Bik Shui House, Shui Pin Wai Estate, Yuen Long	2476 6745
2. Hong Kong Employment Development Service Limited	Shop 101, 1/F, Long Ping Shopping Centre, 1 Long Ping Road, Yuen Long	2479 2020
3. Hong Kong Sheng Kung Hui Welfare Council	4 Tin Lung Road, Tin Shui Wai (St. Matthias' Integrated Service)	2446 0738
4. Hong Kong Young Women's Christian Association	1/F, Tin Shui Community Centre, Tin Shui Wai	2447 9253
5. International Social Service Hong Kong Branch	2/F, Ancillary Facilities Block, Tin Yuet Estate, Tin Shui Wai	2446 1223
6. International Social Service Hong Kong Branch	Unit 1, G/F, Shan Shui House, Shui Pin Wai Estate, Yuen Long	2388 8859
7. New Territories Association Retraining Centre Limited	Flat C, 1/F, Happy House, 43 Kau Yuk Road, Yuen Long.	2479 0650
8. New Territories Association Retraining Centre Limited	No. 2, G/F, C Wing, Wah Yat House, Tin Wah Estate, Tin Shui Wai	2253 6566
9. The Hong Kong Confederation of Trade Unions	3/F, Len Shing Mansion, 162-168 Castle Peak Road, Yuen Long	2478 0883
10. The Hong Kong Confederation of Trade Unions	Shop G10, G/F, Grandeur Terrace Shopping Centre, 88 Tin Shui Road, Tin Shui Wai	3401 1285
11. The Hong Kong Federation of Trade Unions	1/F, On Ga Building, 28 Chun Yin Square, Yuen Long	2477 2788/ 2479 1220
12. The Hong Kong Federation of Trade Unions	G/F, Yat Kong House, Tin Yat Estate, Tin Shui Wai	2146 3483

Transport Support Scheme  
List of Service Centres under the Implementing Agencies

*\* For application, please make telephone booking with the service centre in advance.\**

Implementing Agency	Address of Service Centre	Tel. No.
<b>Tuen Mun</b>		
13. Hong Kong Sheng Kung Hui Welfare Council	G/F, 120-130 Oi Lok House, Yau Oi Estate, Tuen Mun (Tuen Mun Integrated Service Centre)	2451 2345
14. Hong Kong Young Women's Christian Association	G/F, Oi Lim House, Yau Oi Estate, Tuen Mun (Tuen Mun Integrated Social Services Centre)	2441 6638
15. New Territories Association Retraining Centre Limited	G/F, 20-29 Wu Pik House, Wu King Estate, Tuen Mun	2455 0505
16. The Federation of Hong Kong and Kowloon Labour Unions	Room 1806, Parklane Square, 2 Tuen Hi Road, Tuen Mun	2457 5602
17. The Hong Kong Confederation of Trade Unions	1/F, Flat F, Kwun Hing Building, 28 Heung Sze Wui Road, Tuen Mun	2443 2609
18. The Hong Kong Federation of Trade Unions	2/F, Affluence Garden Comm., Tuen Mun	2459 9171
19. The Hong Kong Federation of Trade Unions	1/F, Lee Yuen Mansion, 113-115 Heung Sze Wui Road, Tuen Mun	2618 3628
20. Yan Oi Tong Limited	5/F, 18 Kai Man Path, Tuen Mun (Jockey Club Training Centre)	2655 7575
21. Yan Oi Tong Limited	Flat 401-407, 4/F, Oi Yung House, Yau Oi Estate, Tuen Mun (Rainbow Community Integrated Development Centre)	2450 8822

## List of Service Centres under the Implementing Agencies

*\* For application, please make telephone booking with the service centre in advance.\**

Implementing Agency	Address of Service Centre	Tel. No.
<b>North</b>		
22. New Territories Association Retraining Centre Limited	No. 339-344, 3/F, Choi Yuk House, Choi Yuen Estate, Sheung Shui	2639 0548
23. New Territories Association Retraining Centre Limited	Shop No.12, G/F, Ka Fuk Shopping Centre, Fanling	2669 0222
24. The Hong Kong Federation of Trade Unions	1/F, 6 Lung Sum Avenue, Sheung Shui	2603 1305
<b>Islands</b>		
25. Hong Kong Sheng Kung Hui Welfare Council	G/F, Tung Ma House, Fu Tung Estate, Tung Chung (Tung Chung Integrated Services)	2109 0082
26. Hong Kong Outlying Islands Women's Association Limited	R/F 01, No. 2 Carpark, Yat Tung Estate, Tung Chung	3141 7110
27. Hong Kong Outlying Islands Women's Association Limited	2/F, 35A Yung Shue Wan Main Street, Lamma Island	2982 1308
28. Hong Kong Outlying Islands Women's Association Limited	G/F, 6 Fat Lee Street, Peng Chau	2983 1272
29. Methodist Centre	7/F, East Town Bldg, 41 Lockhart Road, Wanchai, Hong Kong	2527 2250
30. The Hong Kong Federation of Trade Unions	3/F, Hang Fung Commercial Centre, 29-35 Wing Kut Street, Sheung Wan, Hong Kong	2545 5512

**With effect from 1 July 2010 (Thur), the following service centres will cease accepting**

applications to the Transport Support Scheme (TSS). Applicants who have been admitted to the TSS via the said centres can continue to submit your claims for subsidy at their corresponding service centres.

For enquiries on the above arrangement, please contact the corresponding service centres.

31. The Evangelical Lutheran Church of Hong Kong	G/F, Yiu Wah House, Tin Yiu Estate, Tin Shui Wai	2446 2023
32. The Evangelical Lutheran Church of Hong Kong	Room 1004, Kin Wing Commercial Building, 24-30 Kin Wing Street, Tuen Mun	2454 4801
33. The Evangelical Lutheran Church of Hong Kong	G/F, Choi Lai House, Choi Yuen Estate, Sheung Shui	2673 2120
34. The Hong Kong Federation of Trade Unions	2/F, Namtin Mansion, 31-41 Kau Yuk Road, Yuen Long. (With effect from 16 April 2010, the centre will no longer accept new applications. Applicants who have joined the Scheme via the Centre may submit claims for allowances to the Centre on the first and third Monday of each month. Alternatively, applicants may submit claims to another centre of FTU at Chun Yin Fong in Yuen Long.)	2476 1657

Note: For updated information of the Scheme including addresses and tel. no. of service centres, please refer to the Scheme website [www.tss.labour.gov.hk](http://www.tss.labour.gov.hk) .

4/2011