

*GUIDE TO  
OCCUPATIONAL  
DISEASES  
PRESCRIBED FOR  
COMPENSATION  
PURPOSES*



Occupational Safety and Health Branch  
Labour Department



OCCUPATIONAL SAFETY & HEALTH COUNCIL

This guide is prepared by the  
Occupational Safety and Health Branch  
Labour Department

---

This Edition    February 2009

This guide is issued free of charge and can be obtained from offices of the Occupational Safety and Health Branch of the Labour Department. It can also be downloaded from website of the Department at [http://www.labour.gov.hk/eng/public/content2\\_9.htm](http://www.labour.gov.hk/eng/public/content2_9.htm). For enquiries about addresses and telephone numbers of the offices, please call 2559 2297.

Information on the services offered by the Occupational Safety and Health Council can be obtained through hotline 2739 9000.

This guide may be freely reproduced except for advertising, endorsement or commercial purposes. Please acknowledge the source as "Guide to Occupational Diseases Prescribed for Compensation Purposes" published by the Labour Department.

**Guide to Occupational Diseases  
Prescribed for Compensation Purposes**



# CONTENTS

	Page
<b>Introduction</b> .....	1
<b>Classification of Prescribed Occupational Diseases</b> .....	1
<b>Group A — Diseases Caused by Physical Agents</b> .....	2
A1. Radiation illness .....	2
A2. Heat cataract .....	2
A3. Compressed air illness .....	2
A4. Cramp of hand or forearm .....	3
A5. Beat hand .....	3
A6. Beat knee .....	3
A7. Beat elbow .....	3
A8. Tenosynovitis of hand or forearm (including elbow) .....	4
A9. Carpal tunnel syndrome .....	4
<b>Group B — Diseases Caused by Biological Agents</b> .....	5
B1. Anthrax .....	5
B2. Glanders .....	5
B3. Leptospirosis .....	6
B4. Extrinsic allergic alveolitis .....	6
B5. Brucellosis .....	7
B6. Tuberculosis .....	7
B7. Parenterally contracted viral hepatitis .....	8
B8. Infection by <i>Streptococcus suis</i> .....	8
B9. Avian chlamydiosis .....	8
B10. Legionnaires' disease .....	9
B11. Severe acute respiratory syndrome .....	9
B12. Avian influenza A .....	9
<b>Group C — Diseases Caused by Chemical Agents</b> .....	10
C1. Lead poisoning .....	10
C2. Manganese poisoning .....	10
C3. Phosphorous poisoning .....	10
C4. Arsenic poisoning .....	11
C5. Mercury poisoning .....	11
C6. Carbon bisulphide poisoning .....	11

	Page
C7. Benzene poisoning .....	12
C8. Poisoning by benzene derivatives .....	12
C9. Dinitrophenol poisoning .....	12
C10. Poisoning by halogen derivatives of hydrocarbons .....	13
C11. Diethylene dioxide poisoning .....	13
C12. Chlorinated naphthalene poisoning .....	13
C13. Poisoning by oxides of nitrogen .....	13
C14. Beryllium poisoning .....	14
C15. Cadmium poisoning .....	14
C16. Dystrophy of the cornea .....	14
C17. Skin cancer .....	15
C18. Chrome ulceration .....	15
C19. Urinary tract cancer .....	15
C20. Peripheral polyneuropathy .....	15
C21. Localised papillomatous or keratotic new skin growth .....	16
C22. Occupational vitiligo .....	16
<b>Group D — Diseases Caused by Miscellaneous Agents .....</b>	<b>17</b>
D1. Skin inflammation or ulceration .....	17
D2. Inflammation or ulceration of upper respiratory passages or mouth .....	17
D3. Nasal cancer .....	17
D4. Byssinosis .....	18
D5. Occupational asthma .....	18
<b>Pneumoconiosis and Mesothelioma Group .....</b>	<b>19</b>
Silicosis .....	19
Asbestosis .....	19
Mesothelioma .....	19
<b>Occupational Deafness .....</b>	<b>19</b>
<b>Procedure for Compensation Claims .....</b>	<b>20</b>
For diseases prescribed under the Employees' Compensation Ordinance .....	20
For silicosis, asbestosis and mesothelioma .....	21
For occupational deafness .....	21
Enquiry .....	21
References .....	21

## **Introduction**

An employee who is incapacitated by an occupational disease as prescribed in the relevant ordinances will be entitled to receive compensation if he/she fulfils the requirements. Most of the diseases concerned are prescribed in the Second Schedule of the Employees' Compensation Ordinance. Silicosis, asbestosis and mesothelioma are covered by the Pneumoconiosis and Mesothelioma (Compensation) Ordinance while noise induced deafness by reason of employment is covered by the Occupational Deafness (Compensation) Ordinance.

The aim of this book is to provide a brief description of the prescribed occupational diseases and the occupational circumstances in which they may arise. More detailed information is provided in another publication named 'Guidance Notes on the Diagnosis of Notifiable Occupational Diseases' which is intended for doctors dealing with such diseases.

## **Classification of Prescribed Occupational Diseases**

- (1) Under Employees' Compensation Ordinance:**
  - Group A - Diseases Caused by Physical Agents
  - Group B - Diseases Caused by Biological Agents
  - Group C - Diseases Caused by Chemical Agents
  - Group D - Diseases Caused by Miscellaneous Agents
  
- (2) Under Pneumoconiosis and Mesothelioma (Compensation) Ordinance:**
  - Pneumoconiosis and Mesothelioma - Diseases Caused by Silica or Asbestos
  
- (3) Under Occupational Deafness (Compensation) Ordinance:**
  - Occupational Deafness

### Group A – Diseases Caused by Physical Agents

<b>Item</b>	<b>Description of Occupational Disease</b>	<b>Brief Notes</b>	<b>Some Examples of Trades / Processes / Occupations which may give rise to the disease</b>
A1	Inflammation, ulceration or malignant disease of the skin or subcutaneous tissues or of the bones, or blood dyscrasia, or cataract, due to electromagnetic radiations (other than radiant heat), or to ionising particles	Acute inflammation of exposed area, dermatitis, loss of hair, skin ulceration and cancer. Anaemia Leukaemia Cataracts Tumours	Medical or industrial radiography, gas mantles manufacturing, luminizing of watch, maintenance of X-ray machines.
A2	Heat cataract	Cataracts caused by prolonged/frequent heat exposure of the eye.	Glass manufacturing, iron & steel foundries work, furnace operator.
A3	Dysbarism, including decompression sickness, barotrauma and osteonecrosis	Barotrauma: damage in ear, lung and sinuses. e.g. rupture of ear drum.  Decompression illness: joint pain, numbness, clumsiness and paralysis.  Osteonecrosis: bones and joints damage leading to shoulder and hip pain in particular.	Compressed air worker, diver.



Item	Description of Occupational Disease	Brief Notes	Some Examples of Trades / Processes / Occupations which may give rise to the disease
A 4	Cramp of the hand or forearm due to repetitive movements	Spasm, tremor or pain in the hand or forearm brought about by performing repetitive movements of finger, hand or arm.	Typing, stenographing, knitting.
A5	Subcutaneous cellulitis of the hand (Beat hand)	Inflammation of the subcutaneous soft tissue of the hand caused by prolonged friction or pressure. The affected part is swollen and tender.	Manual labour.
A6	Bursitis or subcutaneous cellulitis arising at or about the knee due to severe or prolonged external friction or pressure at or about the knee (Beat knee)	Inflammation of the subcutaneous soft tissue or bursa of the knee caused by prolonged friction or pressure. The affected part is swollen and tender.	Cleaner working on the knees, miner, carpet layer.
A7	Bursitis or subcutaneous cellulitis arising at or about the elbow due to severe or prolonged external friction or pressure at or about the elbow (Beat elbow)	Inflammation of the subcutaneous soft tissue or bursa of the elbow caused by prolonged friction or pressure. The affected part is swollen and tender.	Miner, bricklayer.

<b>Item</b>	<b>Description of Occupational Disease</b>	<b>Brief Notes</b>	<b>Some Examples of Trades / Processes / Occupations which may give rise to the disease</b>
A8	Traumatic inflammation of the tendons of the hand or forearm (including elbow), or of the associated tendon sheaths	Inflammation of the tendons or tendon sheaths of the hand or forearm caused by unaccustomed or repetitive movements of the hand and forearm. e.g. pain, swelling and tenderness in the wrist, forearm or elbow.	Manual labour, typist, cleaner, assembler.
A9	Carpal tunnel syndrome	Use of hand-held powered tools which transmit vibrations to the hand. Prolonged use of these tools can result in compression of the median nerve in the carpal tunnel at the wrist.	Use of pneumatic drill, chained saw, grinding tool.

## Group B – Diseases Caused by Biological Agents

Item	Description of Occupational Disease	Brief Notes	Some Examples of Trades / Processes / Occupations which may give rise to the disease
B1	Anthrax	<p>A disease of cows and horses caused by <i>Bacillus anthracis</i> which can be transmitted to human through contact with such animals and their products such as hairs, hides or excrement.</p> <p>The infection gains entrance through a small cut or scratch.</p> <p>Clinical features: Skin ulceration, pneumonia.</p>	Butcher, abattoir worker, veterinary personnel, tannery & wool worker.
B2	Glanders	<p>A disease of horses caused by <i>Malleomyces mallei</i> which can be transmitted to human.</p> <p>Clinical features: Fever, vomiting, diarrhoea, joint pain, necrosis of nasal septum and ulceration of the throat and mouth.</p> <p>Pustular eruptions over body, deep ulcers of the nose and painful subcutaneous abscesses can occur in severe cases.</p>	Horse handler, stable cleaner, veterinary personnel, jockey.

Item	Description of Occupational Disease	Brief Notes	Some Examples of Trades / Processes / Occupations which may give rise to the disease
B3	Infection by leptospira	<p>A disease of rats, dogs and other mammals caused by <i>Leptospira interrogans</i> which can be transmitted to human through contact with infected animals or their urine.</p> <p>Clinical features: Headache, malaise, jaundice.</p> <p>Can cause serious illness with fever and collapse.</p>	Sewage cleaner, pig and dog handler, veterinary personnel.
B4	Pulmonary disease due to the inhalation of the dust of mouldy hay or other mouldy vegetable produce, and characterized by symptoms and signs attributable to a reaction in the peripheral part of bronchopulmonary system, and giving rise to a defect in gas exchange (Farmer's lung)	<p>Allergic inflammation of the lungs caused by inhalation of mouldy hay or other decaying vegetable matter.</p> <p>Clinical features :</p> <p>Acute: breathlessness, fever, malaise, muscle pain and headache in few hours after exposure to the dust.</p> <p>Chronic: repeated attacks can cause irreversible fibrosis of the lungs.</p>	Farm worker.

Item	Description of Occupational Disease	Brief Notes	Some Examples of Trades / Processes / Occupations which may give rise to the disease
B5	Infection by organisms of the genus brucella	<p>A disease of cows, pigs, sheep and dogs which can be transmitted to human through contact with tissue, blood, urine and body fluid of infected animals.</p> <p>Clinical features: Fever and rigors, generalized ache, headache, anorexia and fatigue.</p> <p>Meningitis and inflammation of the lungs may complicate the illness.</p>	Butcher, veterinary personnel, farm worker, diary worker.
B6	Tuberculosis	<p>Infected by <i>Mycobacterium tuberculosis</i>.</p> <p>Clinical features: Low grade fever, night sweating, fatigue, anorexia, weight loss and persistent cough, blood stained sputum and chest pain.</p> <p>Infection of other organs e.g. lymph nodes, joints, kidney may occur.</p>	Health care worker, medical laboratory worker, pathologist, post-mortem worker.

Item	Description of Occupational Disease	Brief Notes	Some Examples of Trades / Processes / Occupations which may give rise to the disease
B7	Parenterally contracted viral hepatitis	<p>Infected by hepatitis virus by contact of skin wound or mucous membranes with infected blood, blood products or internal body fluids, e.g. needlestick injuries.</p> <p>Clinical features: Malaise, nausea, vomiting, anorexia, headache, upper abdominal discomfort, jaundice.</p>	Health care worker, medical laboratory worker, pathologist, post-mortem worker.
B8	Infection by <i>Streptococcus suis</i>	<p>A disease of pigs that can affect human via skin wound or inhalation.</p> <p>Clinical features: Acute meningitis with severe headache, neck stiffness, vomiting and fever.</p>	Handling and selling of pork, butcher, pig farmer.
B9	Avian chlamydiosis	<p>Infected by <i>Chlamydia psittaci</i> which is present in infected birds, their feathers and discharges.</p> <p>Clinical features: Chills, fever, malaise, headache, sore throat, muscle ache, joint pain, cough and blood stained sputum.</p> <p>Heart and liver may be infected.</p>	Pet shop worker, poultry farmer, poultry handler, veterinary personnel, feather and down processor.

<b>Item</b>	<b>Description of Occupational Disease</b>	<b>Brief Notes</b>	<b>Some Examples of Trades / Processes / Occupations which may give rise to the disease</b>
B10	Legionnaires' disease	<p>Infected by <i>Legionella pneumophila</i>.</p> <p>Clinical features: Headache, fever, malais, muscle ache, cough and breathlessness.</p> <p>Severe lung infection and respiratory failure may occur.</p>	Repair and maintenance of fresh water cooling system or hot water service system.
B11	Severe acute respiratory syndrome	<p>Infected by a coronavirus known as SARS-associated coronavirus, which can be transmitted by respiratory droplets produced when an infected person coughs or sneezes.</p> <p>Clinical features: High fever, chills, headache, an overall feeling of discomfort, body aches, dry non-productive cough and diarrhea.</p> <p>Pneumonia and respiratory failure may occur.</p>	Medical and nursing staff, medical research and laboratory worker, pathologist, post-mortem or funeral services worker.
B12	Avian influenza A	<p>Infected by Avian influenza A viruses, which can be transmitted to human through contact with infected poultry or birds.</p> <p>Clinical features: typical influenza-like symptoms e.g. fever, cough, sore throat, muscle aches, and conjunctivitis.</p> <p>Pneumonia and respiratory failure may occur.</p>	Pet shop worker, poultry farmer, poultry handler, veterinary personnel, research and laboratory worker.

**Group C – Diseases Caused by Chemical Agents**

<b>Item</b>	<b>Description of Occupational Disease</b>	<b>Brief Notes</b>	<b>Some Examples of Trades / Processes / Occupations which may give rise to the disease</b>
C1	Poisoning by lead or a compound of lead	Fatigue, anorexia, anaemia, joint pain, muscle pain and weakness, paralysis, colicky abdominal pain and constipation.	Lead smelting, manufacture of batteries, application of lead paint, handling of leaded petrol.
C2	Poisoning by manganese or a compound of manganese	Fatigue, anorexia, headache, weakness of the legs, muscular cramps, slurred speech, clumsiness, tremor and mental disturbance.	Manufacture of dry cell battery, electroplating, paint application.
C3	Poisoning by phosphorus or an inorganic compound of phosphorus or the anti-cholinesterase or pseudo anti-cholinesterase action of organic phosphorus compounds	<p>Yellow phosphorus poisoning:            Acute: abdominal pain, vomiting, general weakness and jaundice.            Chronic: thickening of jaw bone “phossy jaw” which is prone to infection and necrosis.</p> <p>Phosphine poisoning: headache, weakness, chest pain, breathlessness, nausea, vomiting, convulsion, coma and death.</p> <p>Organophosphate poisoning: sweating, excessive saliva and tearing, breathlessness, tremor and convulsion.</p>	Handling and manufacture of pesticides, fertilizers and explosives.



Item	Description of Occupational Disease	Brief Notes	Some Examples of Trades / Processes / Occupations which may give rise to the disease
C4	Poisoning by arsenic or a compound or arsenic	<p>Acute: abdominal pain, profound vomiting, rice water stools, convulsion.</p> <p>Chronic: skin inflammation and ulceration, painless ulceration and perforation of nasal septum, tingling in hands and feet, liver damage. Also associated with skin cancer.</p>	<p>Manufacture or handling of pesticides, alloys and pigments.</p> <p>Use of arsine gas in the electronic industry.</p>
C5	Poisoning by mercury or a compound of mercury	<p>Acute: pain, inflammation and necrosis of mucosa in mouth and throat, nausea, vomiting, abdominal pain and even kidney damage.</p> <p>Chronic: inflammation of gums, excessive saliva, metal taste, tremor, slurred speech, visual field defect, mental disturbance and kidney damage.</p>	<p>Manufacture or handling of some scientific equipment (e.g. thermometers), batteries, anti-fouling paints, pesticides, amalgam used in dentistry.</p>
C6	Poisoning by carbon bisulphide	<p>Acute: headache, breathlessness, vomiting, palpitations, acute mental disturbance and coma.</p> <p>Chronic: mental disturbance, abdominal pain, muscle weakness, numbness, visual disturbance and cardiovascular disease.</p>	<p>Manufacture of artificial silk, cellophane, vulcanisation of rubber.</p>

Item	Description of Occupational Disease	Brief Notes	Some Examples of Trades / Processes / Occupations which may give rise to the disease
C7	Poisoning of benzene or a homologue of benzene	<p>Acute: headache, nausea, dizziness, convulsion, coma.</p> <p>Chronic: depression of bone marrow — tiredness, pallor, palpitation, breathlessness, easy bruising, prolonged clotting, frequent infections.</p> <p>Can cause leukaemia.</p> <p>Neurological effects — behavioural changes, vertigo &amp; unsteadiness.</p>	<p>Manufacture or handling of solvents, adhesives, dyes, paints and plastics.</p> <p>Processing of petroleum.</p>
C8	Poisoning by a nitro- or amino- or chloro-derivative of benzene or of a homologue of benzene, or poisoning by nitro-chlorobenzene	<p>Acute: headache, breathlessness, cyanosis, weakness, nausea, vomiting, abdominal pain and collapse.</p> <p>Chronic: jaundice, weakness, skin inflammation, headache and dizziness.</p>	<p>Dry cleaning, degreasing, painting and lacquering.</p>
C9	Poisoning by dinitrophenol or a homologue or by substituted dinitrophenols or by the salts of such substances	<p>Acute: stomach upset, loss of appetite, nausea, vomiting, headache, vertigo, high fever, profuse sweating, breathlessness, liver &amp; kidney damage, collapse or even death.</p> <p>Chronic: cataract and decrease of white blood cell count.</p>	<p>Manufacture of dyes, wood preservatives, photographic developers, handling of dinitro-o-cresol (a pesticide).</p>

Item	Description of Occupational Disease	Brief Notes	Some Examples of Trades / Processes / Occupations which may give rise to the disease
C10	Poisoning by halogen derivatives of hydrocarbons of the aliphatic series	Eye and skin irritation, headache, dizziness, nausea, mental disturbance, liver and kidney damage.	Degreasing, dry cleaning, manufacture and repair of refrigerators and fire extinguishers.
C11	Poisoning by diethylene dioxide (Dioxan)	Eye, nose and throat irritation, headache, vertigo, drowsiness, nausea, vomiting, liver and kidney damage.	Manufacture of polishing compounds, cosmetics and paint strippers.
C12	Poisoning by chlorinated naphthalene	Acne over exposed skin surfaces, liver damage	Manufacture of insulated wires, electroplating.
C13	Poisoning by oxides of nitrogen	<p>Nitrogen dioxide is a reddish-brown gas with a pungent odour.</p> <p>Clinical features: Cough, headache, throat irritation, chest tightness. Although these symptoms may resolve within 30 minutes, delayed effects such as lung damage, collapse or even death may occur.</p>	Firing of explosives in quarries, welding.

Item	Description of Occupational Disease	Brief Notes	Some Examples of Trades / Processes / Occupations which may give rise to the disease
C14	Poisoning by beryllium or a compound of beryllium	<p>Acute: Respiratory tract inflammation e.g. cough, fever, chest pain, blood stained sputum, breathlessness.</p> <p>Skin inflammation or nodules caused by implantation of beryllium.</p> <p>Chronic: fatigue, weight loss, rash, joint pain and progressive lung damage.</p>	Manufacture of alloys, semi-conductor components, beryllium ceramics.
C15	Poisoning by cadmium	<p>Acute: throat irritation, cough, chest tightness &amp; pain, breathlessness, chills, sweating, back &amp; limb pains, headache, dizziness, nausea, anorexia and abdominal pain.</p> <p>Severe lung or kidney damage.</p> <p>Chronic: kidney or lung damage.</p>	Electroplating, welding, soldering, manufacture of batteries, plastics and cadmium alloys.
C16	Dystrophy of the cornea (including ulceration of the corneal surface) of the eye	Irritation, pain, redness & swelling of the eye, vision may be impaired.	Handling of mineral oil, tar, pitch, bitumen, soot and arsenic.

Item	Description of Occupational Disease	Brief Notes	Some Examples of Trades / Processes / Occupations which may give rise to the disease
C17	Primary epitheliomatous cancer of the skin	Rapidly growing skin lesions, may be associated with surrounding new growths, non-healing ulcers on arms or other parts of the body exposed to the chemicals.	Handling of mineral oil, tar, pitch, bitumen, soot and arsenic.
C18	Chrome ulceration including perforation of the nasal septum	<p>Skin lumps which progress to ulcer over area exposed to chromium.</p> <p>Inhalation of mists containing chromium salts or direct contact with contaminated fingers may lead to ulceration followed by perforation of the nasal septum.</p>	Chromium plating, dyeing and tanning.
C19	Primary neoplasm of the epithelial lining of the urinary tract (renal pelvis, ureter, bladder and urethra), including papilloma, carcinoma-in-situ and invasive carcinoma	<p>Caused by prolonged exposure to certain aromatic amines e.g. <math>\alpha</math>-naphthylamine, <math>\beta</math>-naphthylamine, benzidine.</p> <p>Clinical feature: Blood in the urine.</p>	Dyeing & printing. Manufacture of rubber, dye and paint.
C20	Peripheral polyneuropathy	<p>Caused by n-hexane or methyl-n-butylketone.</p> <p>Clinical features: Limbs weakness, hands &amp; feet numbness.</p>	<p>Manufacture of shoes, raincoats, handbags.</p> <p>Printing, furniture-assembling, tyre-retreading.</p>

<b>Item</b>	<b>Description of Occupational Disease</b>	<b>Brief Notes</b>	<b>Some Examples of Trades / Processes / Occupations which may give rise to the disease</b>
C21	Localized new growth of the skin, papillomatous or keratotic	Skin growth on arms or other parts of the body exposed to the chemicals.	Handling of mineral oil, tar, pitch, bitumen, soot and arsenic.
C22	Occupational vitiligo	Depigmentation of skin at site of contact with certain chemicals e.g. hydroquinone, paratertiary-butyl phenol.	Shoe-making, use of adhesives.

**Group D — Diseases Caused by Miscellaneous Agents**

<b>Item</b>	<b>Description of Occupational Disease</b>	<b>Brief Notes</b>	<b>Some Examples of Trades / Processes / Occupations which may give rise to the disease</b>
D1	Inflammation or ulceration of the skin produced by dust, liquid or vapour (including the condition known as chloracne but excluding chrome ulceration)	Red, swollen, itchy, painful skin and blisters formation over site of contact with irritants or allergens.	Work with solvents, detergents & oils e.g. cleaners, painters, maintenance workers and hair-dressers.
D2	Inflammation or ulceration of the mucous membrane of the upper respiratory passages or mouth produced by dust, liquid or vapour	Cough. Redness, pain, discharge, ulcer formation and bleeding of the lining of the mouth, throat and nose.	Handling of certain chemicals e.g. chromate, arsenic, soda.
D3	Carcinoma of the nasal cavity or associated air sinuses (nasal carcinoma)	Related to inhalation of wood dusts.  Clinical features: Facial swelling, pain, nasal obstruction, blood stained or foul smelling nasal discharge.	Manufacture or repair of wooden goods, footwear.

Item	Description of Occupational Disease	Brief Notes	Some Examples of Trades / Processes / Occupations which may give rise to the disease
D4	Byssinosis	<p>Disease of the lungs associated with prolonged exposure to raw cotton dust.</p> <p>Clinical features: Chest tightness, breathlessness, cough, wheezing which may be worse on the first day at work after a weekend or vacation, may progress to permanent lung damage.</p>	Carding & spinning workers.
D5	Occupational asthma	<p>The disease is characterized by episodic airway obstruction induced by any sensitizing agents inhaled at work.</p> <p>Clinical features: Attacks of sneezing, running nose, cough, breathlessness or wheezing may develop within minutes of exposure, or be delayed for hours after the worker has left the workplace.</p>	Exposure to isocyanates, formaldehyde, proteolytic enzymes, flour and wheat.



### Pneumoconiosis and Mesothelioma Group – Diseases Caused by Inhalation of Silica or Asbestos

Disease	Brief Notes	Some Examples of Trades / Processes / Occupations which may give rise to the disease
Silicosis	Fibrosis of the lungs due to inhalation of free silica dust.  Clinical features: Cough and breathlessness.	Quarries, construction, mining, tunnelling, sand blasting, jade-polishing, stone splitting, manufacture of glass and pottery.
Asbestosis	Fibrosis of the lungs due to inhalation of asbestos dust.  Clinical features: Breathlessness, cough and chest pain.	Brake & clutch maintenance and repairing, insulation processes, building demolition.
Mesothelioma	A primary malignant neoplasm of the mesothelial tissue due to inhalation of asbestos dust.  Clinical features: Breathlessness, cough, chest pain, abdominal pain and weight loss.	Brake & clutch maintenance and repairing, insulation processes, building demolition.

### Occupational Deafness

Disease	Brief Notes	Some Examples of Trades / Processes / Occupations which may give rise to the disease
Occupational deafness	Hearing loss of both ears caused by prolonged exposure to loud noise.	Use of power driven grinding tools on metal, percussive & drilling tools on rocks, use of chain saws, jet/internal combustion engine, manufacture of textile and plastic, printing, rifle shooting.

# PROCEDURE FOR COMPENSATION CLAIMS

## A. For Diseases Prescribed Under the Employees' Compensation Ordinance

*What should an Employer do? : Notification of Occupational Disease*

If an employee suffers from occupational disease prescribed under the Employees' Compensation Ordinance, the employer should submit a Notice of Occupational Disease (Form 2A) in duplicate to the Labour Department within 14 days of the employee's incapacity, or in the case of death, within 7 days of the death of the employee.

*What should an Employee do?*

An employee who has been diagnosed to have suffered from a prescribed occupational disease should follow the instructions of the medical practitioner in receiving medical treatment. He/she should submit the sick leave certificates to the employer as soon as possible and keep a photocopy for reference.

The employee should also attend medical clearance at the Occupational Medicine Unit as directed by the notification issued by the Employees' Compensation Division of the Labour Department. Once the employee's condition is considered to be stable by a medical professional, the Occupational Medicine Unit would determine whether the employee should be referred to the Employees' Compensation Assessment Board for assessing the permanent incapacity.

*Compensation*

An employee who suffers incapacity arising from a prescribed occupational disease is entitled to receive compensation under the Employees' Compensation Ordinance, if the disease is due to the nature of any prescribed occupation in which he/she was employed at any time within a prescribed period.

During the period of temporary incapacity (i.e. sick leave arising from an occupational disease), the employee shall be entitled to receive periodical payments at the rate of four-fifths of his/her normal earnings. The periodical payments are payable on the employee's normal pay days.

The employer shall also pay medical expenses incurred by the employee for receiving medical treatment. The medical expenses payable are subject to a daily maximum listed in Employees' Compensation Ordinance.

If the employee suffers from permanent incapacity from the prescribed occupational disease, he/she shall be entitled to receive the compensation for permanent incapacity. The amount depends on his/her monthly earnings, age and the percentage of loss of earning capacity as determined by the Employees' Compensation Assessment Board.

**B. For Silicosis, Asbestosis and Mesothelioma**

Please refer to publications of the Pneumoconiosis Compensation Fund Board

**C. For Occupational Deafness**

Please refer to publications of the Occupational Deafness Compensation Board

**Enquiry**

Enquiry on compensation matters : 2717 1771

Enquiry on pneumoconiosis and mesothelioma compensation : 2852 4822

Enquiry on occupational deafness compensation : 2723 1288

**References**

1. A Concise Guide to the Employees' Compensation Ordinance
2. How to Claim Employees' Compensation for Work-related Injuries
3. Employees' Compensation Ordinance
4. Guide to Pneumoconiosis and Mesothelioma (Compensation) Ordinance
5. Pneumoconiosis and Mesothelioma (Compensation) Ordinance
6. Pamphlets on the Occupational Deafness Compensation Scheme
7. Occupational Deafness (Compensation) Ordinance



勞工處 職業安全及健康部 出版  
政府物流服務署印

(採用環保油墨及取材自可再生林木的紙張印製)

2/2009-5-OHB6



目錄

引言

例須補償職業病的分類

A類

物理因素所引致的疾病：

A 1

放射病

A 2

熱內障

A 3

氣壓病

A 4

手部或前臂痙攣

A 5

手部皮下蜂窩織炎

A 6

膝部粘液囊炎

A 7

手肘粘液囊炎

A 8

手部或前臂(包括手肘)腱鞘炎

A 9

腕管綜合症

B類

生物因素所引致的疾病：

B 1

炭疽病

B 2

馬鼻疽病

B 3

鉤端螺旋體病

B 4

外在過敏性肺泡炎

B 5

布魯氏桿菌病

B 6

結核病

B 7

非經腸道感染的病毒性肝炎

B 8

豬型鏈球菌感染

B 9

鸚鵡熱或飼鳥病

C 19	C 18	C 17	C 16	C 15	C 14	C 13	C 12	C 11	C 10	C 9	C 8	C 7	C 6	C 5	C 4	C 3	C 2	C 1	C類	B 12	B 11	B 10
尿道癌	鉻潰瘍	皮膚癌	角膜營養障礙	鎘中毒	鉍中毒	氮氧化物中毒	氯化萘中毒	二氯化二乙烯中毒	碳氫化合物的鹵素衍生物中毒	二硝基苯酚中毒	苯衍生物中毒	苯中毒	二硫化碳中毒	汞中毒	砷中毒	磷中毒	錳中毒	鉛中毒	化學因素所引致的疾病：	甲型禽流感	嚴重急性呼吸系統綜合症	退伍軍人病
.....	.....	.....	.....	.....	.....	.....	.....	.....	.....	.....	.....	.....	.....	.....	.....	.....	.....	.....	.....	.....	.....	.....
(13)	(13)	(12)	(12)	(12)	(12)	(11)	(11)	(11)	(11)	(10)	(10)	(10)	(9)	(9)	(9)	(8)	(8)	(8)		(7)	(7)	(7)



參考資料.....	(19)	
查詢電話.....	(19)	
職業性失聰.....	(19)	
矽肺病、石棉沉着病及間皮瘤.....	(19)	
職業性失聰.....	(18)	
索取補償的程序.....	(18)	
僱員補償條例訂明的疾病.....	(18)	
職業性失聰.....	(17)	
職業性失聰.....	(17)	
間皮瘤.....	(16)	
石棉沉着病.....	(16)	
矽肺病.....	(16)	
肺塵埃沉着病及間皮瘤類.....	(16)	
職業性哮喘病.....	(15)	
棉屑沉着病.....	(14)	
鼻癌.....	(14)	
上呼吸道或口腔發炎或潰瘍.....	(14)	
皮膚發炎或潰瘍.....	(14)	
其他因素所引致的疾病.....	(14)	
D 類.....	(14)	
D 1.....	(14)	
D 2.....	(14)	
D 3.....	(14)	
D 4.....	(14)	
D 5.....	(14)	
職業性哮喘病.....	(13)	
職業性白斑病.....	(13)	
局部皮膚瘤(乳頭狀或角化性).....	(13)	
多發性外周神經炎.....	(13)	
C 20.....	(13)	
C 21.....	(13)	
C 22.....	(13)	

僱員如染上有關法例訂明的職業病以致喪失工作能力，並符合要求的情況，可按照法例索取補償。大部份例須補償的職業病已於僱員補償條例附表2中列明，矽肺病、石棉沉着病及間皮瘤是按肺塵埃沉着病及間皮瘤(補償)條例的規定處理，而因工作而暴露於噪音所致的失聰則按職業性失聰(補償)條例的規定處理。

本指南旨在淺釋例須補償的職業病，其中包括有關疾病的簡介和有關工序及職業的例子，更為詳盡的資料收錄在另一本只供醫生參考的英文冊子——職業病診斷須知內。

## 例須補償的職業病的分類

### (1) 根據僱員補償條例：

- A類——物理因素所致的疾病
- B類——生物因素所致的疾病
- C類——化學因素所致的疾病
- D類——其他因素所致的疾病

### (2) 根據肺塵埃沉着病及間皮瘤(補償)條例：

肺塵埃沉着病及間皮瘤——矽或石棉所致的疾病

### (3) 根據職業性失聰(補償)條例：

職業性失聰

A. 物理因素所致

A4	A3	A2	A1	項
<p>因重複動作引致手或前臂痙攣</p>	<p>氣壓病，包括減壓症、氣壓傷及骨壞死</p>	<p>熱內障</p>	<p>因電磁輻射(輻射熱除外)或電離粒子引致皮膚或皮下組織或骨發炎、潰瘍或惡性疾病、或血質不調，或內障</p>	<p>職業病概述</p>
<p>手指、手部或手臂需要長期進行重複性動作而引致手部或前臂痙攣、震顫或疼痛。</p>	<p>減壓症：骨骼及關節疼痛、麻痺、行動笨拙和癱瘓。 骨壞死：骨骼及關節受損害，特別引致肩和髖關節疼痛。</p>	<p>眼睛長時間或頻繁地暴露於高溫環境會引致白內障。</p>	<p>皮膚炎、毛髮脫落、皮膚潰瘍、皮膚癌。 貧血、血癌、白內障、腫瘤。</p>	<p>簡介</p>
<p>打字、抄寫員、電腦資料輸入員、編織。</p>	<p>在受壓縮空氣下工作的人員、潛水員。</p>	<p>製造玻璃、鋼鐵煉製、火爐操作員。</p>	<p>醫學或工業上放射攝影，製造燈紗，夜光錶，X光機保養工作。</p>	<p>有關工序及職業的例子</p>

A9	A8	A7	A6	A5	項
<p>腕管綜合症</p>	<p>手或前臂(包括手肘)的腱或相關腱鞘的外傷性炎症</p>	<p>因手肘或周圍部分受嚴重或長期的外來磨擦或壓力而引起手肘或周圍部分患粘液囊炎或皮下蜂窩織炎(肘瘍)</p>	<p>因膝或周圍部分受嚴重或長期的外來磨擦或壓力而引起膝或周圍部分患粘液囊炎或皮下蜂窩織炎(膝瘍)</p>	<p>手皮下蜂窩織炎(手瘍)</p>	<p>職業病概述</p>
<p>由於重複使用會震動的手提動力工具而引致手腕腕管內的正中神經受壓。</p>	<p>手部及前臂因非慣常性和重複性動作而引致上述部位的腱鞘或腱出現炎症反應。手腕、前臂或手肘會疼痛、腫脹及觸痛。</p>	<p>手肘部因長期受摩擦或受壓，引致皮下軟組織或粘液囊出現炎症，受影響部位會腫脹及觸痛。</p>	<p>膝部因長期受摩擦或壓力而引致皮下軟組織或粘液囊出現炎症，受影響部位會腫脹及觸痛。</p>	<p>手部因長期受摩擦或受壓而引致皮下軟組織出現炎症。受影響部位會腫脹及觸痛。</p>	<p>簡介</p>
<p>使用風力鑽、鏈鋸、磨機。</p>	<p>搬運工作、打字、清潔人員、裝配員。</p>	<p>礦工、砌磚工人。</p>	<p>需要跪著勞動的清潔人員、礦工、鋪地氈工人。</p>	<p>搬運工作。</p>	<p>有關工序及職業的例子</p>

B. 生物因素所致

項	B1	B2	B3
職業病概述	炭疽	馬鼻疽	受鈎端螺旋體傳染
簡介	<p>由炭疽菌引起並可傳染給人的疾病。當人類接觸到受感染的動物、其皮毛或排泄物時，細菌可經由破損的皮膚侵入人體。</p> <p>可引致皮膚潰爛、肺炎。</p>	<p>馬鼻疽是馬的疾病。當人類接觸到受感染的馬匹會染上馬鼻疽。</p> <p>病徵包括發熱、嘔吐、腹瀉、關節痛、鼻中隔壞死、口和喉部潰瘍等。</p> <p>嚴重者可引致全身出現膿疱、鼻部深層潰瘍和皮下膿腫等。</p>	<p>鈎端螺旋體病常見於鼠類、犬類及其他哺乳類動物。人類接觸受感染動物或其尿液亦可染上此病。</p> <p>病徵包括頭痛、不適、黃疸等。</p> <p>病情嚴重者，會有發熱和休克。</p>
有關工序及職業的例子	<p>屠場工人、獸醫及其助理人員、皮革廠和毛料業工人。</p>	<p>馬房工作者、獸醫及其助理人員、騎師。</p>	<p>渠務工人、豬房和狗房工作者、獸醫及其助理人員。</p>

B6	B5	B4	項
<p>結核病</p>	<p>受布魯氏菌屬生物傳染</p>	<p>因吸入發霉乾草或其他發霉蔬菜產品的塵埃引致肺病，其症狀與病癥歸因於支氣管肺系統邊緣部分的反應以致影響氣體交換(農夫肺)</p>	<p>職業病概述</p>
<p>受到結核桿菌感染。</p> <p>病徵包括發熱、夜汗、疲乏、食慾不振、體重減輕、持續咳嗽、痰可帶血和胸部疼痛等。</p> <p>其他器官如淋巴結、關節和腎臟等，亦可受感染。</p>	<p>布魯氏菌可感染牛、豬、羊及狗等動物。當人類接觸到受感染動物的組織、血液、尿液及其他體液等，可能受到感染。</p> <p>徵狀包括發熱、發抖、全身疼痛、頭痛、食慾不振和疲乏。</p> <p>併發症包括腦膜炎和肺炎。</p>	<p>由於吸入含有發霉乾草或腐爛蔬菜的物質的塵埃而引致肺部產生過敏性炎症。</p> <p>急性反應：呼吸困難、發熱、不適、肌肉疼痛和頭痛。</p> <p>長期影響：多次急性反應可引致肺部纖維病。</p>	<p>簡介</p>
<p>醫護人員、醫學化驗室人員、病理學家、解剖工作人員。</p>	<p>屠場工人、獸醫及其助理人員、農場工人、奶製品工人。</p>	<p>農場工人。</p>	<p>有關工序及職業的例子</p>

項	B7	B8	B9
職業病概述	非經腸道而患上的病毒性肝炎	豬型鏈球菌傳染病	飼鳥病／鸚鵡熱
簡介	當皮膚傷口或粘膜接觸帶病毒的血液、體液和血液製成品時便可能受到感染。 (例如針刺損傷) 病徵包括身體不適、噁心、嘔吐、食慾不振、頭痛、上腹痛及黃疸。	此乃豬的疾病。這病菌經由皮膚傷口或呼吸道進入人體。 可引起急性腦膜炎，病徵包括劇烈頭痛，頸部僵硬，嘔吐和發熱等。	這病由衣原體鸚鵡熱菌所引致。這種病菌存在於受感染鳥類或其羽毛和分泌及排洩物內。 病發時會發冷、發熱、身體不適、頭痛、喉痛、肌痛、關節痛、咳嗽和痰帶血。 心臟、肝臟也可受到感染。
有關工序及職業的例子	醫護人員、醫學化驗室人員、病理學家、解剖工作人員。	處理及售賣豬肉。 屠場工人、養豬工人。	寵物店工作人員、飼養家禽者、處理家禽肉食工人、獸醫及其助理人員、羽毛加工人員。

B12	B11	B10	
<p>甲型禽流感</p>	<p>嚴重急性呼吸系統綜合症</p>	<p>退伍軍人病</p>	<p>職業病概述</p>
<p>由甲型禽流感病毒引起，人類可透過接觸受感染的禽鳥而受傳染。</p> <p>病徵包括發燒、咳嗽、喉嚨痛和肌肉疼痛等典型流行性感冒似的徵狀、眼結膜炎。</p> <p>可引致肺炎及呼吸衰竭。</p>	<p>由一種冠狀病毒(名為 SARS 關聯冠狀病毒)引起，而該病毒可通過受感染病人咳嗽或打噴嚏時發出的呼吸道飛沫來傳播。</p> <p>病徵包括發高燒、發冷、頭痛、全身不適、身體疼痛、乾咳、腹瀉。</p> <p>可引致肺炎及呼吸衰竭。</p>	<p>病者由嗜肺性軍團桿菌所感染。</p> <p>病徵包括頭痛、發熱、身體不適、肌肉疼痛、咳嗽和氣喘。</p> <p>嚴重可引致肺炎和呼吸衰竭。</p>	<p>簡介</p>
<p>寵物店工作工人、飼養家禽者、處理家禽肉食工人、獸醫及其助理人員、醫療研究工作者及實驗室工作人員。</p>	<p>醫護人員、醫療研究工作者及實驗室工作人員、病理學家、驗屍工作人員或殮殮服務工作人員。</p>	<p>修理或保養淡水冷卻系統或熱水系統。</p>	<p>有關工序及職業的例子</p>



## C. 化學因素所致

項	C1	C2	C3
職業病概述	鉛或鉛化合物中毒	錳或錳化合物中毒	磷或磷無機化合物中毒，或因磷有機化合物的抗膽素酯酶作用或假抗膽素酯酶作用而中毒
簡介	疲乏、食慾不振、貧血、關節痛、肌肉痛及乏力、癱瘓、腹部絞痛和便秘。	疲乏、食慾不振、頭痛、腿部乏力、肌肉痙攣、語音不清、行動笨拙、震顫、精神紊亂。	黃磷中毒： 急性：腹痛、嘔吐、全身虛弱、黃疸。 慢性：可引致頷骨增厚、發炎和壞死。 磷化氫中毒： 頭痛、虛弱、胸痛、呼吸困難、噁心、嘔吐、抽搐、昏迷、死亡。 有機磷化合物中毒： 汗液、唾液和淚水過多。 呼吸困難、震顫、抽搐。
有關工序及職業的例子	溶鉛業、製造電池、使用及處理含鉛的漆料或汽油。	使用油漆。	製造及處理除害劑、肥料及炸藥。

C6	C5	C4	項
<p>二硫化炭中毒</p>	<p>汞或汞化合物中毒</p>	<p>砷或砷化合物中毒</p>	<p>職業病概述</p>
<p>慢性：精神紊亂、腹痛、肌肉無力、痲痺、視力受損和心血管病。</p> <p>急性：頭痛、呼吸困難、嘔吐、心悸、精神紊亂和昏迷。</p>	<p>慢性：牙齦發炎、唾液過多、口內有金屬味、震顫、語音不清、影響視野、精神紊亂、腎臟受損。</p> <p>急性：口腔及喉之黏膜疼痛、發炎和壞死；噁心、嘔吐、腹痛、甚致腎臟受損。</p>	<p>慢性：皮膚炎和潰爛、鼻中隔無痛地潰爛和穿破、手腳有麻刺感、肝臟受損，亦可引致皮膚癌。</p> <p>急性：腹痛、嚴重嘔吐、米水樣糞、抽搐。</p>	<p>簡介</p>
<p>製造人造絲、玻璃紙和橡膠的硫化工序。</p>	<p>製造或使用某些科學儀器(如溫度計)、電池、防微生物油漆、除害劑及牙醫使用的填補物。</p>	<p>電子行業亦有機會使用砷化三氫。</p> <p>製造或使用除害劑、合金及顏料。</p>	<p>有關工序及職業的例子</p>

C9	C8	C7	項
<p>二硝基苯酚或其同系物中毒，或二硝基苯酚的取代化合物中毒，或上述各物質的鹽類中毒</p>	<p>苯或苯同系物的硝基、氨基或氨基衍生物中毒，或硝基氯苯中毒</p>	<p>苯或苯同系物中毒</p>	<p>職業病概述</p>
<p>慢性：白內障和影響白血球數量減少。</p> <p>急性：胃部不適、失去食慾、噁心、嘔吐、頭痛、暈眩、發高熱、大量流汗、呼吸困難、肝臟和腎臟受損、虛脫或甚至死亡。</p>	<p>慢性：黃疸、乏力、皮膚發炎、頭痛和暈眩。</p> <p>急性：頭痛、呼吸困難、面色青紫、乏力、噁心、嘔吐、腹痛、甚至休克。</p>	<p>神經系統之影響——行為轉變、暈眩和步履不穩。</p> <p>可引致白血病。</p> <p>慢性：抑制骨髓功能——引致疲勞、面色蒼白、心悸、呼吸困難、容易出現瘀傷、延長凝血時間、容易受感染。</p>	<p>簡介</p> <p>急性：頭痛、噁心、頭暈、抽搐、昏迷。</p>
<p>鄰甲酚(殺蟲劑的一種)。</p> <p>製造染料、木防腐劑、相片顯像劑、處理二硝</p>	<p>乾洗業、去油污工序、上漆工序。</p>	<p>處理石油工序。</p> <p>膠。</p> <p>劑、染料、顏料、黏合劑、染料、顏料、膠。</p>	<p>有關工序及職業的例子</p>

C13	C12	C11	C10	項
<p>氮氧化物中毒</p>	<p>氯化萘中毒</p>	<p>二氧化二乙烯(二噁烷)中毒</p>	<p>脂肪系碳氫化合物的鹵素衍生物中毒</p>	<p>職業病概述</p>
<p>雖然上述症狀可於三十分鐘內消除，但肺部損傷、休克或甚至死亡仍可於稍後出現。</p> <p>病徵包括咳嗽、頭痛、喉部不適、胸部緊促。</p> <p>二氧化氮是一種帶有刺鼻氣味的褐紅色氣體。</p>	<p>外露的皮膚會出現粉刺，肝臟受損害。</p>	<p>刺激眼睛、鼻和喉部；頭痛、暈眩、昏睡、噁心、嘔吐、肝臟和腎臟受損。</p>	<p>刺激眼睛和皮膚、頭痛、暈眩、噁心、精神紊亂、肝臟和腎臟受損。</p>	<p>簡介</p>
<p>石礦場爆炸工序、燒焊行業。</p>	<p>製造絕緣電線、電鍍業。</p>	<p>製造磨光化合物、化粧品和脫漆劑。</p>	<p>去油污工序、乾洗業、製造和修理雪櫃及滅火器。</p>	<p>有關工序及職業的例子</p>

C17	C16	C15	C14	項
<p>上皮膚癌初期</p>	<p>眼角膜營養障礙(包括角膜表面潰瘍)</p>	<p>鎘中毒</p>	<p>鉍或鉍化合物中毒</p>	<p>職業病概述</p>
<p>急速擴展的皮膚病變，四周亦可出現不正常增生。接觸化學品的身體部份，可出現難以癒合的潰瘍。</p>	<p>眼部不適、痛楚、紅腫；視力可受損。</p>	<p>慢性：肺部或腎臟受損。</p> <p>肺部或腎臟嚴重受損。</p> <p>急性：刺激喉部、咳嗽、胸部緊促和胸痛、呼吸困難、打顫、出汗、背及四肢疼痛、頭痛、暈眩、噁心、食慾不振和腹痛。</p>	<p>慢性：疲乏、體重減輕、紅疹、關節痛、肺部逐漸受到損傷。</p> <p>急性：呼吸道發炎，例如：咳嗽、發熱、胸痛、痰帶血絲、呼吸困難。</p> <p>皮膚發炎或因鉍之侵入而引致出現小結。</p>	<p>簡介</p>
<p>處理礦油、焦油、瀝青、煤煙和砷。</p>	<p>處理礦油、焦油、瀝青、煤煙和砷。</p>	<p>製造電池、塑膠、鎢合金。</p> <p>電鍍業、燒焊行業、焊錫工序。</p>	<p>製造合金、半導體、含鉍的瓷器。</p>	<p>有關工序及職業的例子</p>

C22	C21	C20	C19	C18	項
職業性白斑病	局部皮膚瘤、乳頭狀或角化性	多發性外周神經炎	泌尿道(腎盂、輸尿管、膀胱及尿道)原發性上皮瘤, 包括乳頭狀瘤、原位癌及侵入癌	鉻潰瘍, 包括鼻中隔穿破	職業病概述
皮膚接觸某些化學品(例如: 對苯二酚, 對特丁基苯酚)後而引致該部位的色素減退。	手部或身體其他部位的皮膚因接觸化學品而出現增生。	接觸正己烷或甲基正丁基甲酮而引致四肢乏力、手腳麻痺。	長期接觸某些芳香族胺 例如: $\alpha$ 萘胺, $\beta$ 萘胺, 聯苯胺。 病徵包括血尿。	皮膚接觸鉻而出現硬塊, 繼而形成潰瘍。 吸入含鉻的霧氣, 可引起鼻中隔潰瘍, 並引致穿孔。黏附鉻的手指接觸鼻中隔, 亦可引致同樣後果。	簡介
製鞋, 使用黏合劑。	處理礦油, 焦油, 瀝青, 煤煙和砷。	印刷業、傢俬裝嵌業及輪胎翻新業。	製造鞋、雨衣、手袋。 料。 製造橡膠、染料及顏料。	染色及印刷業。 業。 鍍鉻、染料及皮革行業。	有關工序及職業的例子

D. 其他因素所致

項	D1	D2	D3	D4
職業病概述	因塵埃、液體或蒸氣引致皮膚發炎或潰爛(包括氣瘡瘡但不包括銹潰瘍)	因塵埃、液體或蒸氣引致上呼吸道或口腔的黏膜發炎或潰瘍	鼻腔或相關氣竇的癌癥(鼻癌)	棉屑沉着病
簡介	接觸刺激性或致敏性化學品的皮膚出現紅腫、痕癢、疼痛和水泡。	可引致咳嗽，口腔、咽喉及鼻腔的粘膜出現紅、疼痛、溢液、潰瘍及出血。	與吸入木屑有關。 病徵包括面腫、疼痛、鼻塞、流鼻血或惡臭的鼻分泌。	長期接觸棉屑而引致的肺病。 病徵包括胸部緊促、呼吸困難、咳嗽、喘鳴。在週末或假期過後的首工作天，病徵會較嚴重。亦可能發展成永久性肺部損傷。
有關工序及職業的例子	需使用溶劑、去污劑及油劑的工作。例如：清潔工人，油漆工人，維修工人及理髮師。	處理某些化學品，例如：鉻酸鹽、砷、碳酸鈉。	製造或維修木器、造鞋業。	梳理棉毛纖維及紡紗工人。

D5	職業性哮喘	項 職業病概述	簡介
		這疾病是由於吸入工作中的致敏物質而引致偶發性的氣管阻塞。 發病時會打噴嚏、流鼻水、咳嗽、呼吸困難或喘鳴。這些病徵亦有可能在工人放工後幾小時才出現。	有關工序及職業的例子
			接觸異氰酸酯、甲醛、蛋白分解酶、麵粉和小麥等。



肺塵埃沉着病及間皮瘤類——這類疾病是因吸入矽和石棉所致

職業病概述	簡介	有關工序及職業的例子
矽肺病	吸入矽塵而令肺部出現纖維化。 病徵包括咳嗽和呼吸困難。	石礦業、建築業，採礦、挖掘隧道、噴沙、玉器打磨、切割石塊、玻璃及搪瓷業。
石棉沉着病	吸入石棉塵而令肺部出現纖維化。 病徵包括呼吸困難、咳嗽和胸痛。	修理及保養車輛掣動器及離合器；隔熱工序；屋宇拆卸。
間皮瘤	吸入石棉塵而導致間皮組織的原發性惡性腫瘤。 病徵包括呼吸困難、咳嗽、胸痛、腹痛及體重下降。	修理及保養車輛掣動器及離合器；隔熱工序；屋宇拆卸。

職業性失聰

<p>職業病概述</p>	<p>職業性失聰</p>
<p>簡介</p>	<p>因長期在高噪音環境下工作，而引致雙耳失聰。</p>
<p>有關工序及職業的例子</p>	<p>對金屬使用機動研磨工具； 對石塊使用衝擊及開鑿工具， 使用鏈鋸； 噴射引擎／內燃機； 紡織業、塑膠業、印刷業； 射擊。</p>

## 索取補償的程序

### (A) 僱員補償條例訂明的疾病：

#### 呈報職業病——僱主須知

當僱員被醫生診斷患有「僱員補償條例」訂明的職業病，僱主應在14天內，以一式兩份的「呈報職業病通知書」(表格2A)向勞工處呈報；如屬死亡個案，則須於7天內呈報。

#### 僱員須知

當僱員一經被診斷患有職業病時，應遵從主診醫生指示，接受治療。僱員並應盡快將病假證明書正本交給僱主，自己則保留一份影印本，作日後辦理手續所用。

僱員在收到由勞工處僱員補償科發出的「銷假表格」及有關的資料後，須前往指定的職業醫學組辦事處辦理銷假手續。當僱員的病況經醫護人員評為穩定時，職業醫學組會決定是否轉介「僱員補償評估委員會」以評定永久喪失工作能力的程度。

#### 補償事宜

如僱員的職業病是由於在法例訂明期間內從事的工作所致，並使其喪失工作能力，僱員有權根據「僱員補償條例」索取補償。

在喪失工作能力期間(即因職業病而獲得的病假)，僱員應可在正常發薪日獲得相當於每日收入的五分之四的病假補償。

僱主應支付有關的醫療費用，每日最高補償限額已於「僱員補償條例」列明。

如職業病引致僱員永久喪失工作能力，僱員有權索取補償。補償額會由「僱員補償評估委員會」根據僱員的收入、年齡和永久喪失工作能力的百分比而訂定。

(B) 矽肺病、石棉沉着病及間皮瘤：

請參閱肺塵埃沉着病補償基金委員會的刊物及單張。

(C) 職業性失聰：

請參閱職業性失聰補償管理局的刊物及單張。

查詢電話

補償事宜：2717 1771

肺塵埃沉着病及間皮瘤補償：2852 4822

職業性失聰補償：2723 1288

參考資料

1. 僱員補償條例簡介
2. 怎樣辦理僱員工傷補償
3. 僱員補償條例
4. 肺塵埃沉着病及間皮瘤補償條例指南
5. 肺塵埃沉着病及間皮瘤補償條例
6. 職業性失聰補償計劃——申請資格、申請程序、補償計算方法
7. 職業性失聰(補償)條例



# 例須補償的職業病指南

本指南由勞工處職業安全及健康部編印

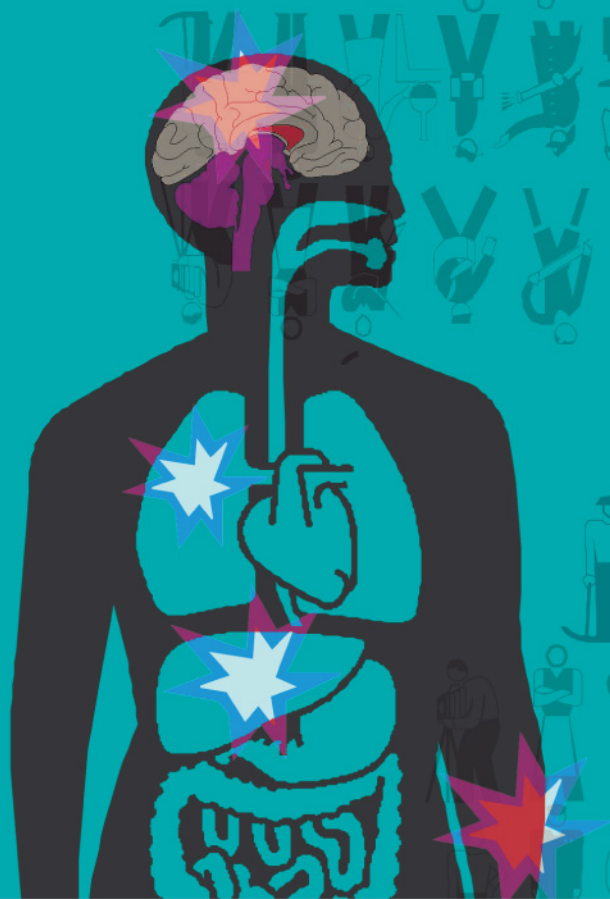
二零零九年 二月版

本指南可以在勞工處職業安全及健康部各辦事處免費索取，亦可於勞工處網站[http://www.labour.gov.hk/public/content2\\_9.htm](http://www.labour.gov.hk/public/content2_9.htm)下載。有關各辦事處的地址及查詢電話，可致電 2559 2297。

你並可透過職安熱線 2739 9000，找到職業安全健康局提供各項服務的資料。

歡迎複印本指南，但作廣告、批核或商業用途者除外。如需複印，請註明錄自勞工處刊物《例須補償的職業病指南》。

# 例須補償的 職業病指南



勞工處  
職業安全及健康部



職業安全健康局